

**IL-17D Antibody (Center)**  
**Purified Rabbit Polyclonal Antibody (Pab)**  
**Catalog # AP1707b****Specification**

---

**IL-17D Antibody (Center) - Product Information**

Application	WB, IHC-P, FC,E
Primary Accession	<a href="#">Q8TAD2</a>
Reactivity	Human, Mouse
Host	Rabbit
Clonality	Polyclonal
Isotype	Rabbit IgG
Antigen Region	57-87

**IL-17D Antibody (Center) - Additional Information****Gene ID** 53342**Other Names**

Interleukin-17D, IL-17D, Interleukin-27, IL-27, IL17D, IL27

**Target/Specificity**

This IL-27 antibody is generated from rabbits immunized with a KLH conjugated synthetic peptide between 57-87 amino acids from the Central region of human IL-27.

**Dilution**

WB~~1:1000

IHC-P~~1:10~50

FC~~1:10~50

E~~Use at an assay dependent concentration.

**Format**

Purified polyclonal antibody supplied in PBS with 0.09% (W/V) sodium azide. This antibody is prepared by Saturated Ammonium Sulfate (SAS) precipitation followed by dialysis against PBS.

**Storage**

Maintain refrigerated at 2-8°C for up to 2 weeks. For long term storage store at -20°C in small aliquots to prevent freeze-thaw cycles.

**Precautions**

IL-17D Antibody (Center) is for research use only and not for use in diagnostic or therapeutic procedures.

**IL-17D Antibody (Center) - Protein Information****Name** IL17D**Function** Induces expression of IL6, CXCL8/IL8, and CSF2/GM-CSF from endothelial cells.

**Cellular Location**  
Secreted.

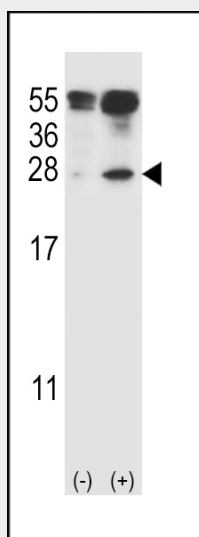
**Tissue Location**  
Expressed preferentially in adipose, skeletal muscle and CNS.

### IL-17D Antibody (Center) - Protocols

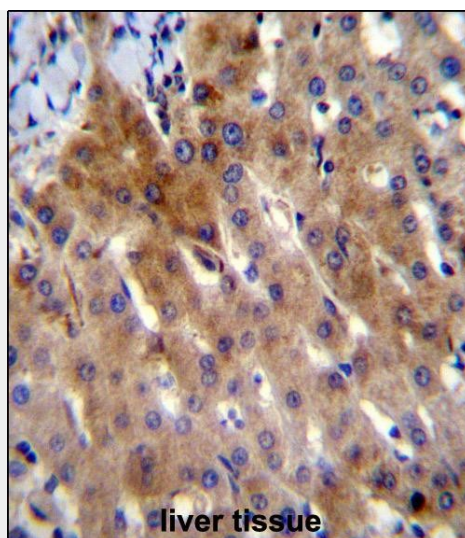
Provided below are standard protocols that you may find useful for product applications.

- [Western Blot](#)
- [Blocking Peptides](#)
- [Dot Blot](#)
- [Immunohistochemistry](#)
- [Immunofluorescence](#)
- [Immunoprecipitation](#)
- [Flow Cytometry](#)
- [Cell Culture](#)

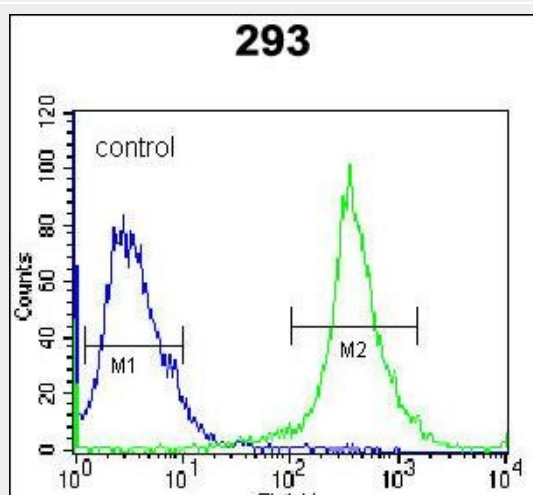
### IL-17D Antibody (Center) - Images



Western blot analysis of IL27 (arrow) using rabbit polyclonal IL27 Antibody (C71) (Cat. #AP1707b). 293 cell lysates (2 ug/lane) either nontransfected (Lane 1) or transiently transfected (Lane 2) with the IL27 gene.



IL-27 Antibody (Center) (Cat. #AP1707b) immunohistochemistry analysis in formalin fixed and paraffin embedded human liver tissue followed by peroxidase conjugation of the secondary antibody and DAB staining. This data demonstrates the use of IL-27 Antibody (Center) for immunohistochemistry. Clinical relevance has not been evaluated.



IL-27 Antibody (Center) (Cat. #AP1707b) flow cytometric analysis of 293 cells (right histogram) compared to a negative control cell (left histogram). FITC-conjugated goat-anti-rabbit secondary antibodies were used for the analysis.

#### IL-17D Antibody (Center) - Background

IL-27 is a cytokine that shares the sequence similarity with IL17. The treatment of endothelial cells with this cytokine has been shown to stimulate the production of other cytokines including IL6, IL8 and CSF2/ GM-CSF. The increased expression of IL8 induced by this cytokine was found to be NF-kappa B-dependent.

#### IL-17D Antibody (Center) - References

Clark, H.F., et al., Genome Res. 13(10):2265-2270 (2003).  
Starnes, T., et al., J. Immunol. 169(2):642-646 (2002).